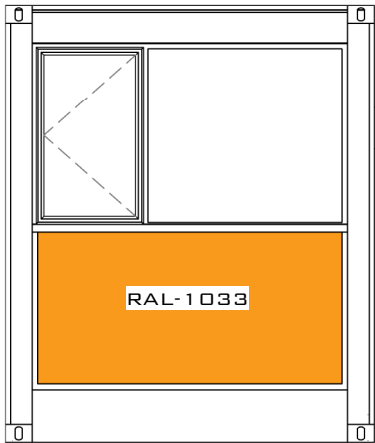
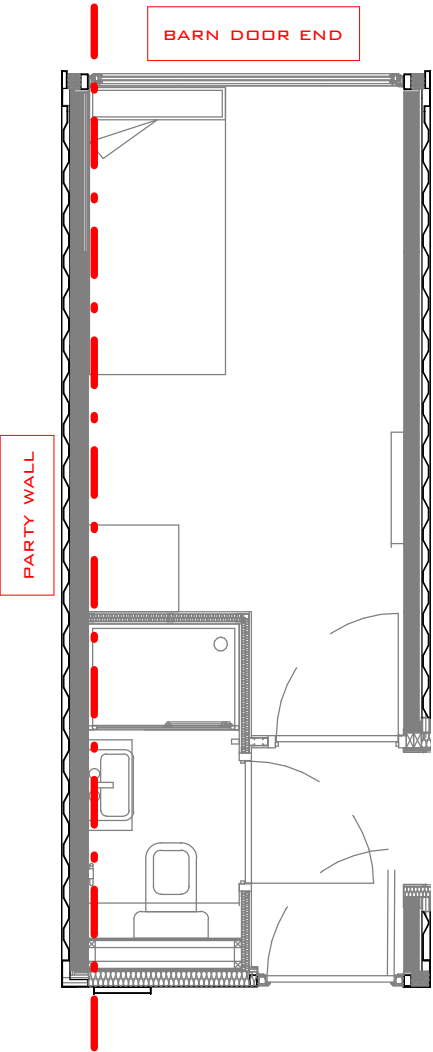


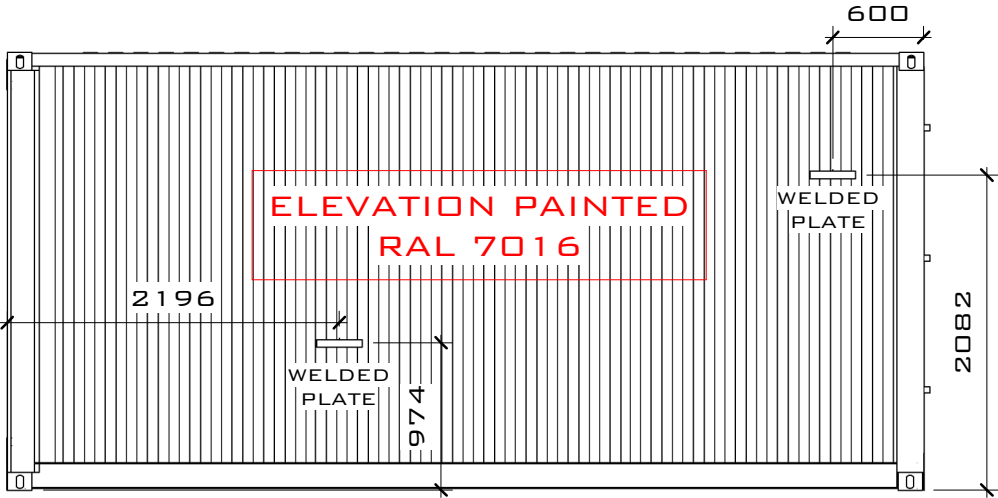
E27 FRONT



E27 REAR



E27 PLAN



E27 LEFT

CONTAINER REF: E27

- TYPE 03 REGULAR UNIT
- EXTERNAL DOOR, RIGHT HUNG, FD30S
- INTERNAL DOOR TYPE 02, LEFT HUNG, UNDERCUT
- INTERNAL DOOR TYPE 02, RIGHT HUNG, FD30
- REAR WINDOW TYPE 01H, CLADDING PANEL COLOUR RAL-1033
- PARTY WALL ON LEFT SIDE
- EXTERNAL LEFT HAND PAINTED RAL 7016, ANTHRACITE GREY
- FRONT AND REAR OF CONTAINER AND ALL STEEL PLATES TO BE PAINTED RAL 7016, ANTHRACITE GREY
- ADDITIONAL PLATES WELDED TO FLANK FOR EXTERNAL LIGHTS
- INTERNAL WELDED PLATES AND CAPTIVE NUTS TO TAKE WALKWAY BRACKET TO FRONT ELEVATION
- REFER TO ELEVATIONS FOR CUT OUT DIMENSIONS
- THESE DRAWINGS ARE TO SHOW THE UNIT TYPE POSITION AND ANY INDIVIDUAL ITEMS. THESE ARE NOT TO BE USED FOR CONSTRUCTION. FOR CONSTRUCTION DETAILS PLEASE SEE THE RELEVANT PLANS, SECTIONS AND DETAILS.

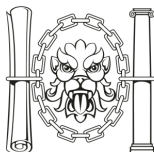
--- . --- PARTY WALL SIDE



THIRD FLOOR
BLOCK E

REV	DATE	REVISION	DRAWN	CHECKED	APPROVED

CONSTRUCTION

SCALE: NOT TO BE SCALED	CLIENT: CARGOTEK	PROJECT: HOPE GARDENS	TITLE: E27 UNIT - DATA SHEET - TYPE 03 REGULAR - THIRD FLOOR - BLOCK E	<div>CITYZEN</div> <div>ARCHITECTURE ENVIRONMENT</div> <div>MARITIME HOUSE BASIN ROAD NORTH HOVE EAST SUSSEX BN41 1WR</div> <div>CONTACT@CITYZENDESIGN.CO.UK WWW.CITYZENDESIGN.CO.UK 01273 704 901</div> <div> Chartered Institute of Architectural Technologists Registered Practice</div>	
	DESIGNER: ROMAN SCHNECKER	©COPYRIGHT CITYZEN LIMITED		DATE: 27.07.17	DRAWING: PROJECT REF - DRG NO. (REVISION) 1705 - CR - 1227 -